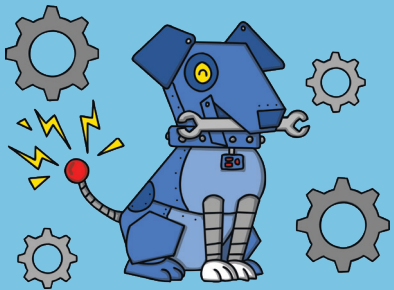
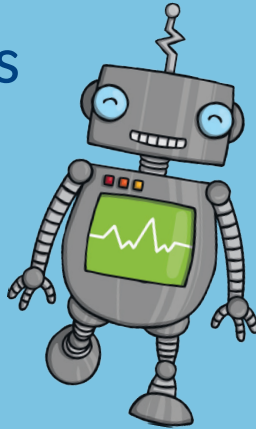


Number Facts within 100 Challenge Cards



twinkl



Number Facts within 100

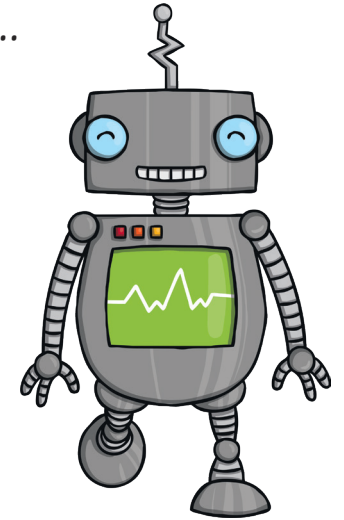
1.

All the Possibilities

Say all the number bonds to 10...

- as fast as you can.
- as slow as you can.
- in a squeaky voice.
- in a very low voice.

Have you said them all?
How do you know?



Number Facts within 100

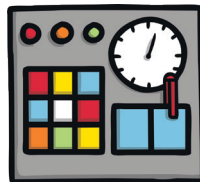
2.

All the Possibilities

Say all the number bonds to 10...

- in a whisper.
- shouting them.
- singing them.

Have you said them all? Can you
work out a pattern to make sure
you have said them all?



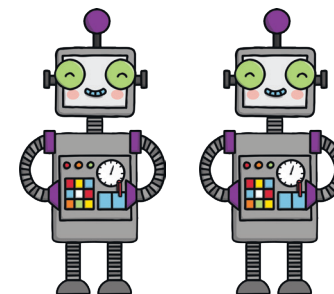
Number Facts within 100

3.

Pairs

In pairs, take it in turns to say a number to 20. The
other person replies with the number bond to 20.

Can you work out any other number bonds given
what you already know?



Number Facts

Look at these number sentences.

$$6 + 3 = 9 \quad 60 + 30 = 90$$

What other number facts do you know related to this number sentence below?

$$5 + 5 = 10$$

Write a number sentence for a friend.

Can they give you any related number facts?

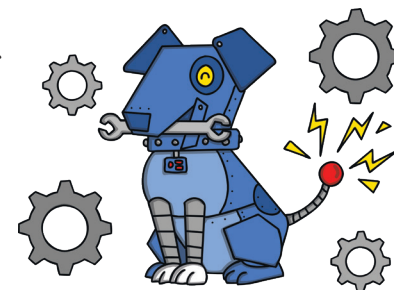
Ask them to prove they are right.

Number Bonds

Draw pictures or use equipment to model number bonds to 16.

Ask a friend to tell you what number bonds you have represented.

Can they represent them in a different way?

**Number Facts**

Look at these number sentences.

$$8 - 2 = 4 \quad 80 - 20 = 40$$

What other number facts do you know related to this number sentence below?

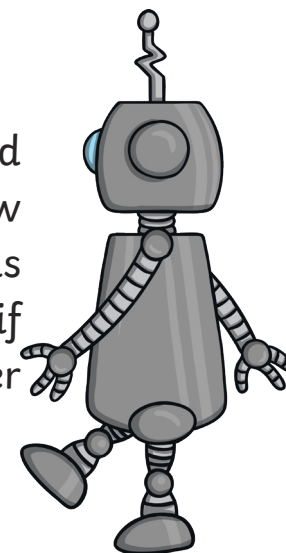
$$9 - 4 = 5$$

What other number facts can a friend come up with? Compare how you found the number facts.

All the Possibilities

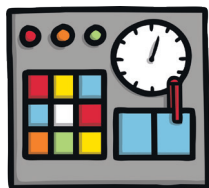
$$2 + 5 = 7 \quad 12 + 5 = 17$$

Can you see a pattern? What would the next number sentence be? How far can you continue with this sequence? What would happen if you added 10 to the second number instead?



$$8 - 3 = 5 \quad 18 - 3 = 15$$

Can you see a pattern? What would the next number sentence be? How far can you continue with this pattern?



$$20 + 0 = 20$$

$$14 + 6 = 20$$

$$19 + 1 = 20$$

$$13 + 7 = 20$$

$$18 + 2 = 20$$

$$12 + 8 = 20$$

$$17 + 3 = 20$$

$$11 + 9 = 20$$

$$16 + 4 = 20$$

$$10 + 10 = 20$$

$$15 + 5 = 20$$

Look at these number bonds to 20. Can you see a pattern? Use this pattern to help you write down some other addition number facts to 100.

$$6 + 6 = \quad 8 + 8 =$$

Can you use equipment to solve these number sentences? What number facts make them easier to solve?

Could you write some other number sentences like these for your friend to solve using equipment?

What do you notice about your answers? Can you explain why this happens?

$$10 - 5 = \quad 14 - 7 =$$

Can you use equipment to solve these number sentences? What number facts make them easier to solve?

What do you notice about your answers? Could you write some other number sentences like these for your friend to solve using equipment?